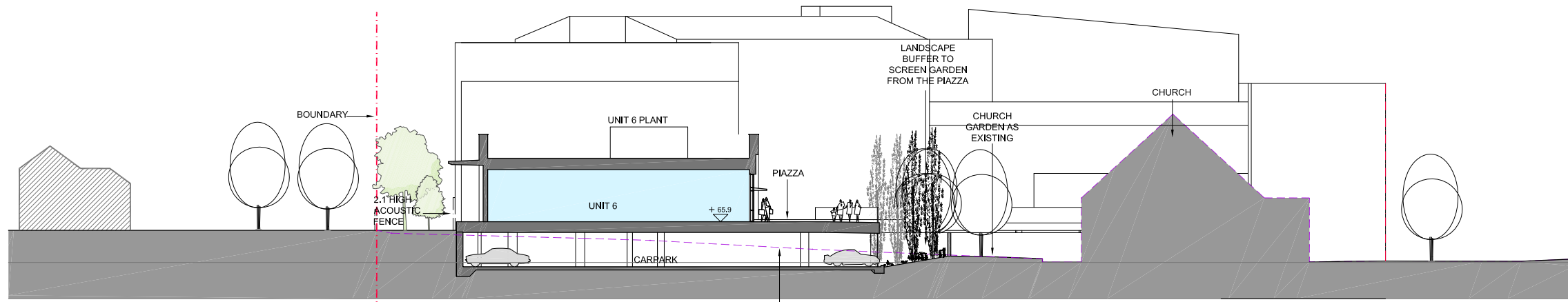


© Mountford Pigott LLP 2012  
 Reproduction in whole or in part by any means is prohibited without the prior permission of Mountford Pigott LLP.  
 This drawing is only to the stated scale if it is printed correctly. M/P/LLP cannot accept responsibility for the incorrect scaling of drawings printed by third parties.  
 All dimensions are in mm unless otherwise stated.  
 If this drawing forms part of an application for planning permission on behalf of the applicant named below, it shall not be used for any other purpose without the express permission of Mountford Pigott LLP.  
 This drawing may incorporate information from other professionals. Mountford Pigott LLP cannot accept responsibility for the integrity and accuracy of such information. Any clarification and/or additions that are required appertaining to such information should be sought from the relevant profession or their appointment representative as listed below.  
 LIST OF INFORMANTS:  
 Ordnance Survey - Licence number: 10001998

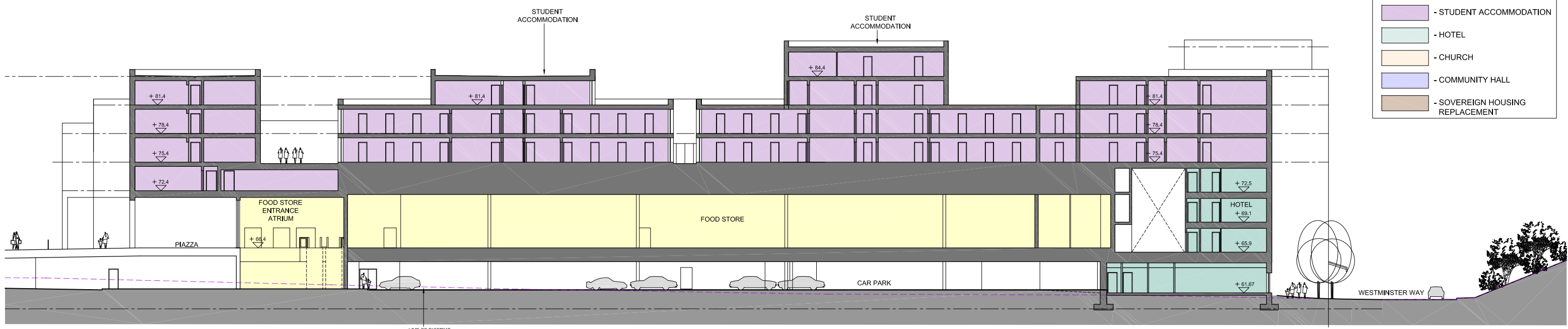
REVISIONS	DATE	DRN	REV
GENERAL UPDATE	23.07.14	JH	B
GENERAL UPDATE	04.08.14	JH	C
UPDATED TO INCORPORATE PLANNERS COMMENTS	11.08.14	MS	D
GENERAL UPDATE	02.09.14	JH	E
GENERAL UPDATE	02.09.14	JH	F
KEY UPDATED	05.09.14	JH	G
GENERAL UPDATE	05.11.14	NT	H



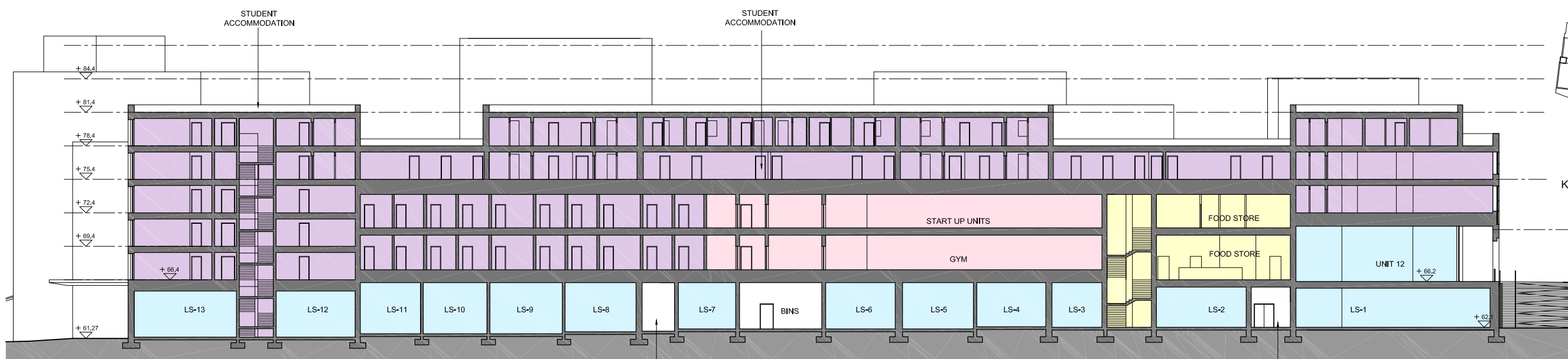
SECTION D-D (THROUGH BLOCK A AND PIAZZA LOOKING SOUTH-WEST)

**KEY:**

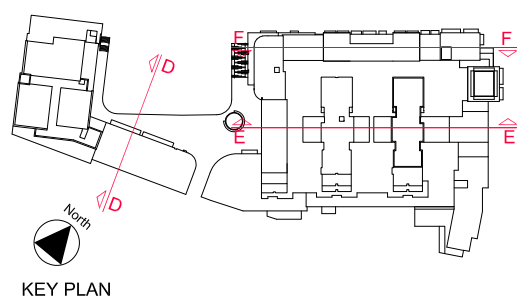
- LIBRARY
- GYM / CRECHE / OFFICES & START UP UNITS
- CINEMA
- RETAIL / RESTAURANT
- FOODSTORE
- STUDENT ACCOMMODATION
- HOTEL
- CHURCH
- COMMUNITY HALL
- SOVEREIGN HOUSING REPLACEMENT



SECTION E-E (THROUGH BLOCK B LOOKING NORTH-WEST)



SECTION F-F (THROUGH BLOCK B LOOKING SOUTH-EAST)



KEY PLAN



MountfordPigott  
 BOTLEY DISTRICT CENTRE  
 SECTIONS  
 1612-P-13-H  
 1:200@ A1/ 1:400@ A3 08.02.13  
 DRAWN BY JH